

HOPI TRIBE/ADOT/FHWA/BIA/
COCONINO COUNTY/NAVAJO
COOUNTY/NDOT

PARTNERSHIP MEETING
OCTOBER 2, 2009



ADOT WORK ON HOPI LANDS

SUMMER OF 2009





SR 264 Flush coat -
seals up the pavement
and extend its life

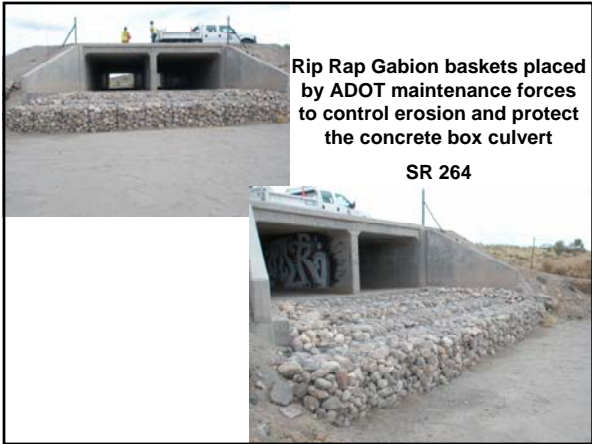




SR 264 Cinder Seal –seals up the pavement, improves skid resistance and extends pavement life



SR 264 Deck Joint repair



Rip Rap Gabion baskets placed by ADOT maintenance forces to control erosion and protect the concrete box culvert

SR 264



Isolated pavement repairs by milling (Zipper) and replacement of Asphalt
SR 264



Traffic Control and repairs from numerous types of accidents

RECENT PROJECTS

POLACCA Turning Lanes -SR 264, MP 390-392 \$1,114,765 **COMPLETE**

VANS TRADING POST Widen from 2 lane to multilane, concrete curb & gutter & drainage. SR US 160, mp 319.7-322.7, \$7,926,683 **COMPLETE**

TUBA CITY-COAL MINE ROAD(I), new pavement, guardrail, bridge barrier. SR 264, mp 323.9-340.2 \$2,761,733 **COMPLETE**

TUBA CITY-COAL MINE ROAD(II), Rockfall containment, new pavement, misc improvements. SR 264, mp 322.0-322.7 \$1,761,163 **COMPLETE**

CINDER SEAL SR 264, MP 362.7-373.7 \$250,000 **COMPLETE**

Projects currently under design

KEAMS CYN TRADING POST TURN LANES SR 264, MP 403, \$740,000 under design FY 2011

CONCRETE BOX CULVERT SR 264, MP 374.3, \$600,000 under design FY 2011

CRACK SEALING, SR 264, MP 403-412, \$112,000 FY 2010

CRACK SEALING, SR 264, MP 418.3-426, \$96,000 FY 2010

NEW PAVEMENT (Leveling) SR 264, MP 382.5-383.2 \$315,000 under design, FY 2010/11



**Projects currently under design
continued**

TUBA CITY LIGHTING, Roadway lighting, US 160 & SR 264, mp 322.0-322.6 & 322.9-322.8 \$1,874,000, bids in fall of 2009

NEW PAVEMENT OVERLAY, SR 87, MP346-368 \$6,500,00 under design, FY 2012

NEW PAVEMENT (Leveling) SR 264, MP 359.5-361.3 \$510,000 under design, FY 2010/11



**DOLLAR VALUE OF ADOT
PROJECTS RECENTLY
COMPLETED**

\$13,814,344

**PROJECTS PLANNED OR IN
DESIGN:**

\$10,747,000

TOTAL \$24,561,344











Completed Rock fall project, SR 264, near Moenkopi



PLACING DRAINAGE FEATURES
NEAR MOENKOPI



WEPO WASH BRIDGE
mile post 388.6
SR 264

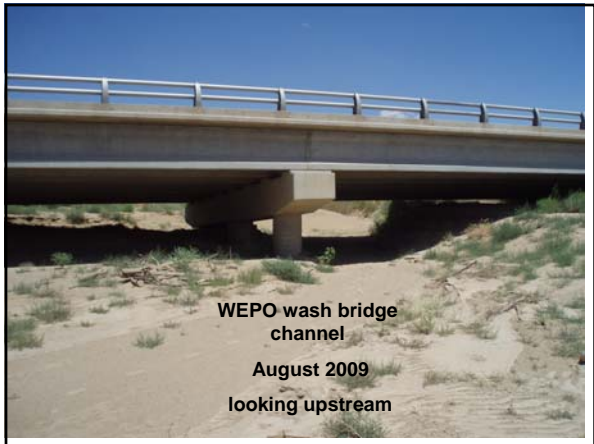
Maintenance cleaning sand &
silt from under WEPO wash
bridge, summer of 2007



Sand/Silt piles to be removed from under WEPO wash bridge, summer, 2007



WEPO wash bridge channel, August, 2009
Looking downstream



WEPO wash bridge channel
August 2009
looking upstream



WEPO wash bridge
channel
August 2009
Looking West



FLOODING AT
MILEPOST 374.3
SR 264
8 FOOT DIAMETER
CORRUGATED METAL MULTI-
PLATE PIPE CULVERT
JULY 15, 2008



When it rains it
pours...

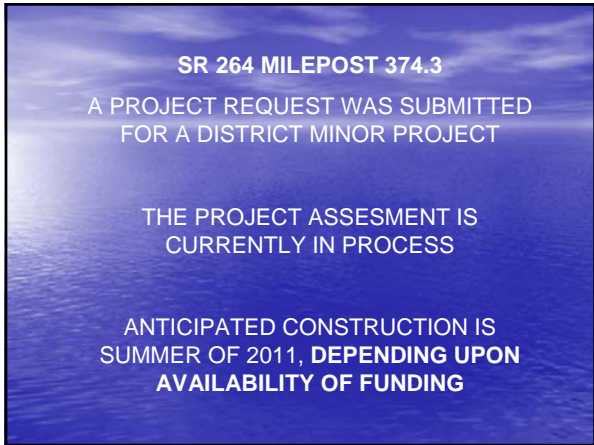








**DEBRIS PARTIALLY PLUGGING
PIPE WAS A CONTRIBUTING
FACTOR**



SR 264 MILEPOST 374.3
A PROJECT REQUEST WAS SUBMITTED
FOR A DISTRICT MINOR PROJECT

THE PROJECT ASSESMENT IS
CURRENTLY IN PROCESS

ANTICIPATED CONSTRUCTION IS
SUMMER OF 2011, **DEPENDING UPON**
AVAILABILITY OF FUNDING



**SR 87, MILEPOST 400.1
POLACCA WASH**





MAINTENANCE FUNDING

In Fiscal year 2009, maintenance funding was cut by 15%

In Fiscal year 2010 maintenance funding was cut by an additional 10%

Areas ADOT has/will cut back:

- MATERIAL PURCHASES
- ASPHALTIC PATCHING MATERIALS,
- GUARDRAIL, FENCE,
- FLEET REDUCTION
- PARKING OF EQUIPMENT
- NO PLANNED OVERTIME
- NO OVERNIGHT TRAVEL
- CLOSURE OF 13 REST AREAS STATE WIDE

WHAT IT REALLY MEANS

We are only spending money on
"MISSION CRITICAL" work
EMERGENCIES or CLOSE to being an
EMERGENCY

The general public will be
affected by seeing reduced
levels of service.



SO WHAT'S THE GOOD NEWS?

WE ARE HERE TODAY WORKING TOGETHER
TO SOLVE ISSUES AND IMPROVING OUR
PARTNERING RELATIONSHIPS

ALTHOUGH WE DON'T HAVE FUNDS TO DO
EVERYTHING WE WANT, OR BELIEVE WE
NEED TO, WE CONTINUE TO MOVE
FORWARD WITH IMPROVEMENTS

WE HAVE VERY CAPABLE, CONSCIENTIOUS
WORKERS WHO STRIVE DAILY TO MAINTAIN,
REPAIR AND KEEP SAFE THE ADOT
ROADWAYS ON THE HOPI RESERVATION

WE ARE ALL STILL EMPLOYED!



ANY QUESTIONS?

THANK YOU!